

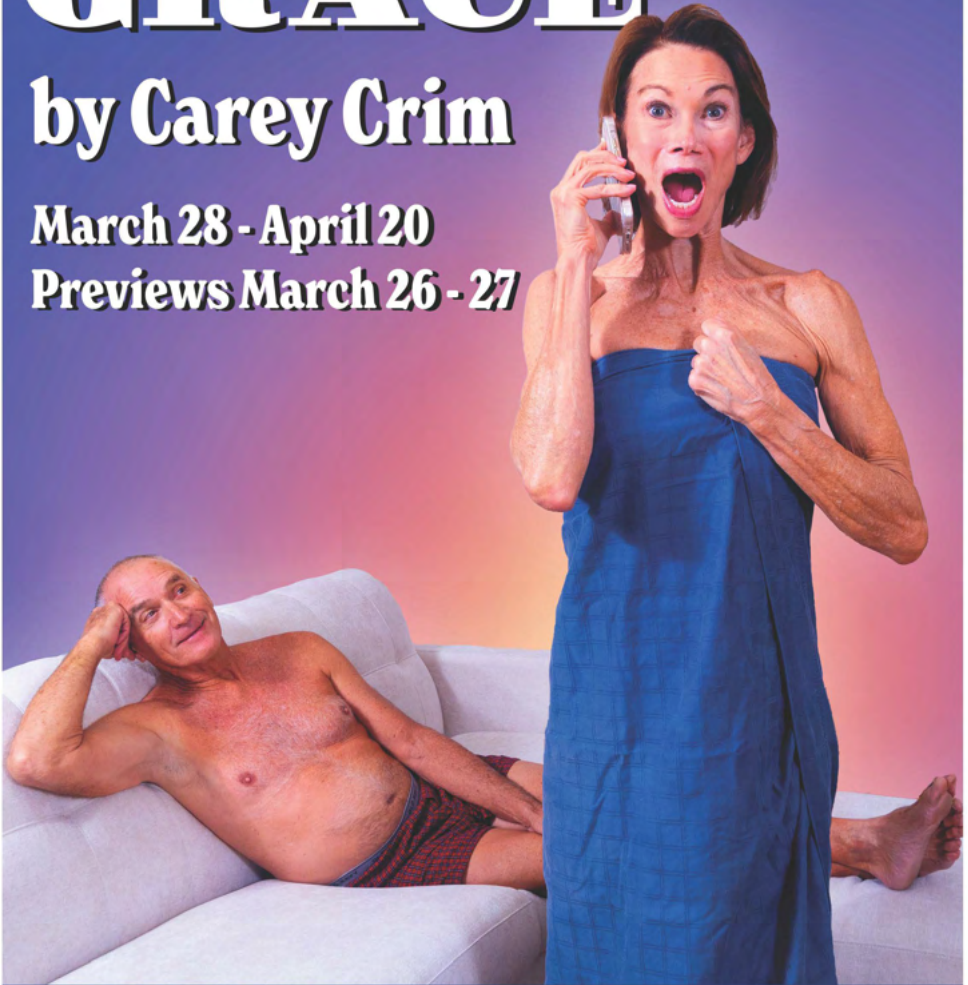


THE HIPPODROME PRESENTS

# MORNING AFTER GRACE

by Carey Crim

March 28 - April 20  
Previews March 26 - 27



HIPPODROME THEATRE  
THEHIP.ORG | 352 375 4477

City of  
**Gainesville**

Visit  
**GAINESVILLE**  
Alachua County, FL



MORNING AFTER GRACE is presented through special arrangement with TRW PLAYS 1180 Avenue of the Americas, Suite 640, New York, NY 10036. [www.trwplays.com](http://www.trwplays.com)

## THE HIPPODROME THEATRE PRESENTS

# MORNING AFTER GRACE

By Carey Crim

Morning After Grace is presented through a special arrangement with TRW PLAYS  
1180 Avenue of the Americas, Suite 640, New York, NY 10036  
[www.trwplays.com](http://www.trwplays.com)

## THE CAST

Kevin Rainsberger\*^  
as Angus

Nell Page\*^  
as Abigail

Jerome Harmann-Hardeman\*  
as Ollie

## CREATIVE TEAM

Director  
Kristin Clippard

AEA Stage Manager  
Amber Wilkerson\*^

Scenic Designer  
Shivanna Sooknanan

Technical Director  
Warren Goodwin

Lighting Designer  
Robert P. Robins^

Properties Designer  
Elaine Shoaf

Sound Designer  
Amanda Yanes

Costume Designer  
Helen Dominguez

Fight Choreographer  
David Patrick Ford^

Head Electrician  
Gavin Cassel

^ Hippodrome Company Member

\*Appearing through an Agreement between the Hippodrome Theatre and Actors' Equity Association,  
the Union of Professional Actors and Stage Managers in the U.S.

Actors' Equity Association ("Equity"), founded in 1913, is the U.S. labor union that represents more than 50,000 actors and stage managers. Equity seeks to foster the art of live theatre as an essential component of society and advances the careers of its members by negotiating wages, working conditions and providing a wide range of benefits, including health and pension plans. Actors' Equity is a member of the AFL-CIO and is affiliated with FIA, an international organization of performing arts union. #EquityWorks



# ACKNOWLEDGEMENTS

## *Morning After Grace*

Featured Production Sponsors

UF Health • Colortyme Rent-to-Own • Milam Funeral & Cremation Services

Thank you to Janet Silverstein and the Silversten family for supporting live theatre and partially underwriting our production of *Morning After Grace*.

Hippodrome programs are sponsored in part by Visit Gainesville Alachua County, and by the City of Gainesville, Dept. of Parks, Recreation, and Cultural Affairs.



The Hippodrome Theatre recognizes and acknowledges that it resides on the historic territories of the Timucua and Seminole peoples who long inhabited this land.

The videotaping or making of electronic or other audio and/or visual recordings of this production and distributing recordings or streams in any medium, including the internet, is strictly prohibited, a violation of the author(s)'s rights and actionable under United States copyright law.



Please let our staff know if you have any accessibility needs. Assisted hearing devices and T-coil compatibility are available.

Alternate Access Theatre Performances will be adapted to take place on our Second Stage/Hipp Cinema, located on the first floor, accommodating individuals requiring elevator access or extra assistance with stairs. Each show will feature one or more AAT performances to ensure continued accessibility while our elevator is undergoing repairs.

Please stay clear of the entrances and exits during the performance.

There will be a 15 minute intermission.

Enjoyed the performance? Leave the Hippodrome Theatre a review on Google!

## ARTISTIC DIRECTOR'S NOTE

Igniting the night with stories - that is the Hippodrome's 52nd Season. We are proud to bring to our community a season full of passion, joy, curiosity, challenges, and change.

In times of upheaval and uncertainty, it's important to look at what makes us a community, what ties us together. Since the beginning of mankind, we've sought solace and connection through shared stories. Live theatre embodies this essence, offering a sacred space where diverse voices converge, inviting us to lean in and become active participants in the unfolding narrative.

And what a story the last couple of months have been. With the sudden loss of the state funding and our struggle with the summer musical, the start of our 52nd Season was in question. But you, our community, answered that question loudly and strongly that the arts are important and part of who we are. The support and commitment of our patrons, our city, and our county has buoyed us to this moment. We know the way forward will be challenging, but as artists and art lovers, we will always find a way together.

This season we will continue to offer our Alternate Access Theatre on our Cinema Second Stage for each show until we have a working elevator again. And of course, on all the other nights of the year, our Cinema brings you series like the National Theatre Live and Cocktails and Classics along with new independent films.

And our season will feature new creative outlets in our Basement venue. Be sure to check out Scene Queens and Basement Sessions, and we are proud to announce our new Hipp Spotlight Cabaret program and the Underground Comedy Series as well.

So join us. Lean in this season and be a part of the conversation, and be a part of the community.

**-Stephanie Lynge** (Hippodrome Artistic Director)

## DIRECTOR'S NOTE

Grief is a life long hurdle. It can slap us in the face, Kick us in the gut, meander slowly alongside us, or jump up to surprise us when we least expect it. We can grieve for many things with a multitude of feelings. It is a process that is vastly different for everyone.

With her play, Carey Crim explores loss of varying kinds through the eyes of three different people. The play looks closely at the "golden years" when most of life has been lived and yet our hearts still feel young. The main character, Angus, says "I don't feel done yet. I don't feel close to done." He is dealing with a double whammy of pain in this stage of life and has to figure out how he will handle it. Luckily, Abigail and Ollie are there to help while also addressing their own personal hurt and concerns about aging.

This story deftly walks a line between comedy and drama because while the circumstances can get wild, the truths that lie underneath their words and actions are relatable and understandable. I think the play gives us permission to go through the pain in order to experience joy again. It's as if Crim is asking:

"How can we give ourselves grace when experiencing deep pain and sorrow?"

It's a good question and one we should think about while we are going through it. Because no matter what kind of losses we have endured, there will be a "morning after" to look forward to.

Thank you for coming to the show and for supporting live theatre. Enjoy!

**-Kristin Clippard** (Director)

## WHO'S WHO IN MORNING AFTER GRACE



### **Kristin Clippard (Director)**

Kristin Clippard's selected directing credits include *Ugly Lies the Bone* and *Dear Jack, Dear Louise* at Florida Studio Theatre, *Silent Sky* and *The Roommate* for American Stage, *Alabaster* for Capital Stage, *The Luckiest People* and *A Christmas Carol* for Orlando Shakespeare Theater, *God of Carnage* for Incline Theater, *Loyalty and Betrayal* (based on *Julius Caesar*) for San Francisco Shakespeare Festival Festival's *Midnight Shakespeare* program. Favorite classic play credits include *Twelfth Night* for Theater at Monmouth, *The Merry Wives of Windsor* for Richmond Shakespeare Festival, and *Macbeth* for Cincinnati Shakespeare. Kristin holds an MFA in Directing from the University of Iowa, and a BFA in Acting from Wright State University. She is an associate member of the Shakespeare Theatre Association, Theatre Communications Group, National New Play Network and the Stage Directors and Choreographers Society. She enjoys developing new works with writers and is a playwright herself. Kristin sits on the Board of Directors for The National New Play Network.

## WHO'S WHO IN MORNING AFTER GRACE

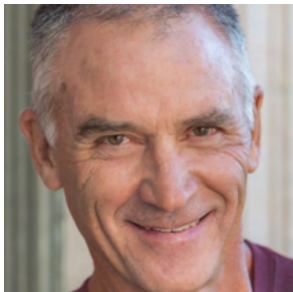


### **Stephanie Lynge^ (Artistic Director)**

Stephanie Lynge is an accomplished actor, director, producer, teacher and coach. Stephanie has enjoyed a career of more than 27 years in professional theater and education. Since 2013 she has worked on more than 50 productions at the Hippodrome either as an actor, director, choreographer, or dramaturg. She was seen on stage in *The Wolves* and *Let The Right One In*. Her other acting credits include performances in New York City on Broadway and Off Broadway at Lincoln Center, BAM, Jean Cocteau Rep, and the York Theater Workshop. Regional theaters include Freefall, Goodspeed Opera House, Sacramento Music Circus, Pasadena Playhouse, Rep Theater of St. Louis, Flat Rock Playhouse, Cincinnati Playhouse in the Park, Seaside Music Theater, as well as several National Tours. Directing credits include the Hippodrome's *Every Christmas Story Ever Told*, *The Legend of Georgia McBride*, *Sex With Strangers*, *The Blameless*, and *Lone Star Spirits* as well as plays at the 45th Street Theater (NYC), New York Musical Theater Festival, and the University of Florida.

Stephanie has served as a Visiting professor at Indiana University, and an Adjunct professor at New Jersey City University and University of Florida. After receiving her BA in Musical Theater from Indiana University, Stephanie lived and worked as an actor in New York City for over 20 years. Stephanie holds a Master of Fine Arts in acting from University of Florida and is a proud member of Actors Equity Association since 1996.

## WHO'S WHO IN MORNING AFTER GRACE



### **Kevin Rainsberger\*^ (Angus)**

Kevin first performed on the Hippodrome stage at the warehouse on NW 53rd Avenue in the Hipp's production of *The Passion of Dracula* way back in 1978. Since that time, Kevin has acted in close to 40 Hippodrome productions, was resident stage manager for 7 years, co-wrote many Theatre-for-Young-Audiences plays that toured locally, statewide and select locations to the North. He has built sets, hung lights, sold program ads, and spearheaded fund raisers during his time at the Hippodrome and even directed *A Christmas Carol* in an off year when he wasn't playing "Scrooge" In between his stints at the Hippodrome, Kevin managed a 23-year career at Walt Disney World performing primarily in the *Indiana Jones Stunt Spectacular*, but also *Finding Nemo the Musical*, *The Hunchback of Notre Dame*, *Who Wants to be a Millionaire*, and as "Merlin" in *The Sword in the Stone*. He opened Dolly Parton's *Dixie Stampede* in Orlando and played "Skeeter" for over four years. Kevin also spent time as a golf professional, first here in Gainesville, and then nearly 2 decades later at a club in Los Angeles.

Kevin has recently written a full-length play, *A Twistmas Carol*, that received much acclaim from an audience of Hipp regulars in its first public reading. Kevin is grateful for all the opportunity the Hippodrome Theatre has provided over the past nearly 5 decades. He is married to Nell Page whom he met at the Hippodrome and is very excited to be sharing the stage with her once again. A heartfelt thanks to Stephanie, and before her- Lauren, Mary, Greg, Bruce, Kerry, Orin, Marshall, Marilyn and Carlos among others for the sacrifices they made and the arduous work they put in to keep this theatre afloat. It ain't been easy. It takes a community. Please help keep Gainesville HIPPI!!!



## WHO'S WHO IN MORNING AFTER GRACE



### **Jerome Harmann-Hardeman\* (Ollie)**

Honored to be making my debut with the Hippodrome Theatre. Some favorite credits include: *The Notebook* (Broadway), *Swing* (Broadway), *Dirty Dancing*, (North American Tour), *Ragtime*, (Coalhouse), *Once On This Island* (Agwe), *The Full Monty* (Horse Simmons), *Kiss of The Spiderwoman with Chita Rivera*, *The Man of La Mancha* (Innkeeper/Gov.), *A Soldiers Play* (Private Smalls), *Romeo and Juliet* (Lord Capulet), *Julius Caesar* (Cassius), *Evita*, *The Fantasticks* (Bellomy), *Dreamgirls* (Curtis), *Floyd Collins* (Ed Bishop), *Joseph and the Amazing Technicolor Dreamcoat* (Simeon), *Cats* (Macavity, Alonzo), *Smokey Joe's Café*, (Adrian). On television *Law and Order*, *the FBI*, *the Last OG*, *Let the Right One In*, *A Taste of Honey*. Jerome is Associate Artistic Director of "Brooklyn Tavern Theater" in NYC an immersive theater company and he's occasionally an audiobook narrator. Love to my beautiful wife.



### **Nell Page\*^ (Abigail)**

Nell Page has been acting at the Hippodrome since its beginning, over 53 years ago out on Hawthorne Road. Since that time, she has appeared in over 70 productions, more than any other performer. In addition to her acting, Nell has performed many "roles" at the Hipp, most recently as Development Consultant. Favorite acting roles from the past include *Les Liaisons Dangeruses*, *As Bees in Honey Drown*, *Steel Magnolias*, *So Long on Lonely Street* and more recently *Good People*, *Vanya, Sonia, Masha and Spike*, *Sirens*, *Miracle on South Division Street*, and *Native Gardens*. Nell appeared off-Broadway at New World Stages for E.P. Productions in *Elvis People*, and is the co-author of *Coquina*, a play that opened in NYC at the Harold Clurman Theatre. In addition, she authored *A Knowing*, a spiritual short story available at The Book Gallery. Nell is excited to once again be sharing the stage with husband, Kevin Rainsberger. They have appeared in at least a half dozen shows together at the HIPPO over the years. When Nell is not acting, she and her Real Estate partner Alaina Cash, Realtors for Campus to Coast Realty, help people buy and sell homes.

## WHO'S WHO IN MORNING AFTER GRACE

**Elaine Shoaf (Properties Designer)** Elaine is now in her third season designing props for the Hippodrome, having previously designed for *Fahrenheit 451*, *Gentleman's Guide to Love and Murder*, *White*, and *Perfect Arrangement*, among others. She graduated from The Savannah College of Art and Design with a BFA in illustration, and has created illustrations for Radix Media, the Florida Trail Association, Hachette Books, Before the Door Pictures, Keepers of the Springs, Swamp Witch Pedals, Zest eDiscovery, the Tampa Bay Brewing Company, and UF Performing Arts. Her second solo show, *Ghost Lines*, premiered at 621 Gallery in Tallahassee, FL in 2017, and her drawings and paintings have been exhibited across the country. Additionally, she makes and sells handbound journals and sketchbooks under the moniker Inky Cap Books, as well as teaching elementary art at Brentwood School.

**Helen Dominguez (Costume Designer/Shop Supervisor)** Helen is excited to join The Hipp team and contribute to the legacy of theatre in Gainesville. Helen holds an MFA in Costume Design from the University of Florida. Some of her recent design credits include *Seussical, Jr* at Gulfshore Playhouse, *POTUS: or, Behind Every Great... here at The Hipp*, *The Pliant Girls* and *Yemaya's Belly* at UF, and *You're a Good Man Charlie Brown*, *Murderers*, *Happy Day's* at Snowy Range Summer Theatre. Through costume, Helen strives to combine the respect of historical and cultural differences of people and characters with the grounding and unifying commonalities of humanity. This was demonstrated most notably in her work for *Agbedidi: Beginnings* in 2021, which was presented at the Prague Quadrennial of Performance, Design, and Space. *Soli Deo Gloria*. Website: <https://www.dominguezdesigns.com>

**Warren Goodwin (Technical Director)** Warren joined the Hippodrome in 2004 as a carpenter in the scene shop, and assumed the role of Master Carpenter in 2006. In addition to helping build over a hundred of Hippodrome sets, Warren served as co-scenic designer on *The Christians* and *The Wolves*. He is thrilled to be currently serving as Technical Director. In his free time, Warren enjoys painting, and is an accomplished local artist. You can often find his work on display next door at Maude's Cafe.

**Gavin Cassel (Head Electrician)** Gavin is elated to be a part of the Hippodrome's 52nd, serving as the Head Electrician. Gavin is a proud alum of Western Michigan University's Technical Theatre Design program, from which they graduated from with a BFA in 2023. Previous electrician credits include *What the Constitution Means to Me*, *Every Brilliant Thing*, *Perfect Arrangement*, *The 25th Annual Putnam County Spelling Bee*, *White*, *The Play That Goes Wrong*, *The Tempest*, *The Thanksgiving Play*, *Pippin*, *Dontrell*, *Who Kiss the Sea*, and many more. When Gavin is not in the theatre, they enjoy biking, listening to jazz at The Bull, and spending time with their cat, Hades. They would like to give a big shout out to their bestfriend, Neta.

## WHO'S WHO MORNING AFTER GRACE

**Robert P. Robins^ (Lighting Designer)** Bob just retired from the Hippodrome after a 40+ year career designing the lighting for every Hippodrome production except four. Look for Bob to return to the Hipp as Guest Lighting Designer for some future shows. He will concentrate on his freelance work, working with clients and projects to keep the creative juices flowing. He thanks the Gainesville community for all the support and for joining him in the artistic growth we have all shared. He has been truly blessed to have the Hippodrome and the Gainesville community his home for over 40 years. You will now find Bob out in the woods on his mountain bike more often!

**Shivanna Sooknanan(Scenic Designer)** Shivanna Sooknanan is a Scenic and Costume Designer; born and raised in NYC. Her experience spans more than 10 years. Her recent credits include *Hell's Kitchen Broadway*, *Hadestown* National Tour among other off Broadway and regional shows. Other than her own designs she has been the associate/ assistant to designers such as Dots, Anna Louizos, Derek McLane, Clint Ramos, Alexander Dodge, Arnulfo Maldonado, Wilson Chin, Dede Ayite etc. She has also worked and designed with companies such as HB Harry Potter, Saks, Disney, Tiffany and Co. Hudson Bay Co., Bergdorf Goodman, Bloomingdales along with pop up shops, pop up events, movie premiers, large events, weddings etc. This is her first show at the Hipp. And she's excited to be back soon!

**Amber Wilkerson\*^ (AEA Stage Manager)** Amber is a professional Stage & Event Manager. She has been affiliated with the Hippodrome Theatre since 2003, first as Properties Intern, then as Assistant Stage Manager before moving to New York City to pursue a career in theatre. She returned to the Hipp as the AEA Stage Manager of *A Christmas Carol* in 2005 & 2006. She has worked professionally for The Metropolitan Opera (NYC), The Shakespeare Theatre of New Jersey (Madison, NJ), North Shore Music Theatre (Beverly, MA), and Times Square New Year's Eve 2006-2010 (NYC). In 2006, Amber served as a Production Assistant on the Broadway musical, *Grey Gardens*. Amber spent five years working with Manhattan Theatre Club as a Subscriber Services Representative and two years as a House Manager at Playwrights Horizons, both in New York City. Originally from Maryland, she holds a B.A. in Theatre Arts from Salisbury University. Amber is a proud member of the Hippodrome Company and the Actors' Equity Association.

**Amanda Yanes (Sound Designer)** Amanda is thrilled to be in her twelfth season at the Hippodrome. Other regional credits include Cape Fear Regional Theatre: *Jesus Christ Superstar*, *Legally Blonde: The Musical*, and *The Parchman Hour: Songs and Stories of the '61 Freedom Riders*, and as the mix engineer in Fayetteville, North Carolina at Dorset Theatre Festival: *Keep moving forward*.

## HIPPODROME STAFF

Company Manager	Amber Wilkerson
Assistant Stage Manager	Olivia Millwood
Artistic Director	Stephanie Lynge
Education Director	Gabrielle Byam
Cinema Coordinator	Adam Azoulay
Front of House Manager	Liz Baer
Group Sales/Box Office	Matt Dibble
Communications Director	Chris Bailey
Marketing Coordinator	Cristina Cabada
Development Associate	Naheed Mojadidi
Office Manager	Bionca Kleinberg
Bookkeeper	Marie House
Costume Designer/Shop Supervisor	Helen Dominguez
First Hand	Asia Weiss
Wardrobe Assistant	Naomi Glaser
Costume Shop Volunteer	Gabe Carreras
Facilities Manager	Dave Peck
Technical Director	Warren Goodwin
Lead Electrician	Gavin Cassel
Scenic Artist	Ken Brown
Carpenter	Meredith Klump
Building Caretaker	Amador Santiago
Assistant Building Caretaker	Jacques Harris
Box Office Representative	Alex Roberts
Sound Engineer	Zixia Li
Bartenders	Jessica Cada, Ellie Baumgartner and Cai Husband
House Managers	Adam Azoulay, Ariel Berrean, Resli Ward and Amanda Barwick

## OUR GENEROUS DONORS

The Hippodrome thanks its many donors for their generous contributions to support our productions and programs! For more information on how your gift supports the Hippodrome, please contact Matt Dibble at (352) 373-5968 ext. 217.

Donations listed are from 3/1/24 through 03/6/25.

### **PRODUCER \$50,000+**

Nathan S. Collier  
Cindy Dorfeld Bruckman

### **DIRECTOR \$10,000+\$49,999**

Anonymous  
Mary Trew & Weaver Gaines  
Dr. Janet Silverstein

### **PLAYWRIGHT \$5,000-\$9,999**

Margaret Ford  
Colleen & Ken Rand  
Dr. Midge Smith  
Anonymous  
Dr. Jan Snyder  
Bill Bryson

### **DESIGNER \$2,500-\$4,999**

Dr. Carol F Meyer  
Anne Margoluis  
Nel & Daniel R Webster

### **COMPOSER \$1,000 \$2,499**

Tim Altmeyer  
Bill & Trina Anderson  
Wayne Archer  
Lauren Birriel &  
Dustin Hall  
Dr. Mary Bennett  
David & Linda Bloom  
Jill Bohlin  
Nelson & Kami Boon  
Landy  
Debbie & Michael  
Conlon  
Dr. Chris & Rusty  
Forsmark  
D.A. Fosser  
Peg & Rus Hall  
Heather Harrell  
Dr. Ann Hatfield  
Dr. Nora Lee Hoover

Charlene Luke  
Tony Maurelli  
Marni Most  
Jon Morris  
Ted & Hallie McFetridge  
Dr. Deborah Rossi  
Mary Sanford  
Joy & Richard Segall  
Veronika Thiebach &  
Michael Gorham  
Dr. Farol Tomson  
Ken Wald & Robin West  
Donna & Wilt Wagner  
Dr. Roy & Marjorie Weiner  
Kate Wilkinson  
Merry Lynne Wilson  
Bill & Carole Zegel  
Kerry A Keenan  
Michelle Jaffee  
Andrew Pierce

## OUR GENEROUS DONORS

### CHOREOGRAPHER \$500-\$999

Joy & Michael Avery  
Dr. Joanne & Ed R. Block  
Phoebe Bowers  
Frederick Brenneman  
Phil & Annie Carta  
Charna & Stuart Cohn  
Albert Eid  
Sandra Fisher  
Dr. Ira Gessener  
Laura Gillman  
Deborah Haggett & Ed Wurzburg  
Dr. Carolyn Hanson  
Fred Harden  
Dr. David Hastings  
Barry & Elaine Jacobson  
Gregg Jones  
Tony Mata & Bradley Harp  
Rev. Maureen Killoran  
Phyllis Lotzkar  
Sallie Maxwell  
Karen Miller  
Sally Ryden  
David & Carole Silverman  
Jennifer Smith  
Connie & Bob Stern  
Jane Townsend  
Dr. Jeff Weingarten  
Dr. Cynthia J White  
Dr. Elaine Young

### CAST \$250-\$499

Anonymous  
Catherine Ackerman  
Walt Barry  
Janice Bird  
Dr. Erin Cooke  
Robert & Collen Cornwell  
Anne D'Amico  
Dr. R Hunt & Jeanne Davis  
Eloise Harman  
Dr. Kathryn Kidder  
Dr. John & Carol Koogler  
Dr. Timothy Martin  
Jeff & Lauren Miller  
Dr. Michael & Jeannene Mironack  
Elizabeth Perdue  
Jacquie & Michael Resnick  
Dan & Nicki Rimkus  
Judith Russell  
Prof. Whitney Sanford  
Carol & Jim Sarisky  
Betty Schelske  
John & Susan Stanton  
Kenya Ward  
Steve & Judy Watkins  
Samuel Welker  
John Williams  
Stan & Peggy Williams  
Mz. Tary Yurkovich  
Harvey & Missy Willis Ziegler

Donations made from 3/1/24 through 3/6/25

**Thank you to Michael A. Eaddy for photographing  
The Hippodrome's moments for the last 20 years**

## CORPORATE SPONSORS

The commitment of the corporate community is critical for the Hippodrome to sustain its highly acclaimed productions and programs. To learn more about corporate partnership opportunities, contact the Hipp at [development@thehipp.org](mailto:development@thehipp.org).

### SEASON PRODUCERS \$50,000+

---

City of Gainesville  
The Collier Companies  
Visit Gainesville, Alachua County

### EXECUTIVE PRODUCERS \$20,000+

---

98.5 KTK, 97.3 The Sky, Country 103.7  
Gator and AM 850  
CBS 4 / NBC9 / WGFL  
Michael and Phyllis Warren on behalf of AMJ  
Group Inc.

The UF School of Theatre + Dance  
James Moore Consulting

### PRODUCERS \$10,000+

---

EFN Properties  
Sweetwater Branch Inn  
Gainesville Health and Fitness  
Harry's Seafood Bar and Grille  
Wind-FM 92.5 Gainesville/95.5 Ocala

WUFT-FM, WUFT-TV  
Ken and Linda McGurn Investment Company  
Quality Plumbing  
Lake and Emerald Publications

### PRODUCTION SPONSORS \$5,000+

---

Ben E. Keith Company  
Bevis Chiropractic  
Colortyme Rent to Own  
Destination Florida  
Greater Gainesville Chamber

The Traveler Bar  
UF Health  
UF Health Psychiatric Hospital  
Marc Radio Group  
Alta Printing  
Renaissance Printing

### PRODUCTION CO-SPONSORS \$2,500+

---

Gator Moving and Storage Co.  
Mini Maid  
Sherwin Williams  
Oak Hammock at the University of Florida  
Milam Funeral & Cremation Services

Alliance Credit Union  
Hampton Inn & Suites  
Myers & Briggs Foundation  
The Bagel Bakery  
JVC Broadcasting Group  
Rip's Cleaners

### PERFORMANCE SPONSORS \$1,750+

---

Tonewood Family Music  
JohnRussell Salon  
Watchguard Technologies  
Allstate Agent - Judy Locascio

**The Hippodrome would like to thank the City of Gainesville and Alachua County for years of generous support.**

## FOUNDATION SUPPORT

Google  
Bryson Foundation LTD  
Amazon Smile Foundation  
Florida Blue Foundation  
The Jelks Family Foundation

## NON-PROFIT PARTNERS

Matheson History Museum  
Community Foundation of North Central Florida  
Pride Community Center of North Central Florida (PCCNCF)

## 2024-2025 LEADING LADIES

This annual women's philanthropy group officially launched in 2015 for women who love and support the arts. We thank all of our past supporters. Below is our 2024-2025 list of supporters (so far!). If you'd like to renew your membership or become a new member, please contact [development@thehipp.org](mailto:development@thehipp.org)

Dr. Theresa Beachy  
Patrice Boyes  
Cindy Dorfeld Bruckman  
Mary Day Coker  
Sheila K. Dickison  
Cherie Fine  
M. Susan Fulford  
Joy Glanzer  
Carol Gwin  
Tashia Hale  
Dr. Nancy Herring  
Cornelia Hollbrook  
Nora Hoover  
Diane Jacobson  
Linda Kallman  
Leslie Klein  
Mary Lane  
Margarita Labarta  
Susan Latini  
Lucinda Lavelli  
Jennifer Lee  
Melanie Leonard  
Judy Locascio  
Virginia Maurer  
Linda McGurn

Dr. Carol F. Meyer  
Chris Morris  
Marni Most  
Allison Nordqvist  
Nell Page Rainsberger  
Julie Penrod-Glen  
Emily Pritchett  
Vera Rabino  
Lynn Rousseau  
Sally E. Ryden  
Vivian Ruth Sawyer  
Ilene Silverman-Budd  
Jan Snyder  
Florence Turcotte  
Justine Vaughen  
Helen Warren  
Shelley Waters  
Jorgia Wooten  
Nicole Yucht



## LEADING LADIES MATCHING GRANT

Anonymous  
Leslie Klein  
Carol F Meyer  
Marni Most  
Frances Gerencser  
Joanne Laframenta  
Melanie Leonard  
Mary Lane

Timothy Altemeyer  
Carol Gwin  
Cindy Dorfeld Bruckman

## DICK GORENBERG MEMORIAL

Candi Adams  
John Burton & Anne Clark  
Michael Cairo Raftice  
John Dobson  
Rachael Dorsey  
Kate Dugan  
Janice Garry  
David Hammer  
Nicholas Daniel Hoop  
Kerry A Keenan  
Dr. Jack Kulas  
Lawrence Lahiff  
Jenni Levy  
Dr. Sandy E Levy  
Linda Lewis  
Joseph & Lucille W Little  
Amber Millan

Heather Montanye  
Daryl J Mullee  
Amanda Padgett Stage  
Melissa Peña  
Drs. Michael & Jaquie Resnick  
Kathie Ruelke  
Sally Samuels  
Neil Schiffman  
Dr. Marianne Schmink  
Molly Singletary  
Dr. Marvin Slott  
Sandra Topp  
Geri Treppa  
Jeff Wade  
Dr. Mary & Barry Wagner

## COLLIER CHALLENGE DONORS

Jessica Abel  
Erika Aenlle  
Sherri & Eric Amundson  
Julie Anspach  
Dr. Lisa Anthony  
Karen & James Jr Archer  
Christine Aytug  
Robert "Kirk" Bachus  
Pamela & Carol Barron  
Walter & Pamela Barry  
Suzie Baxter  
Theresa Beachy  
John & Barbara Bengston  
Azra Bihorac & Charles Hobson  
David Bloom  
James & Tara Blythe  
Joyce Bono  
Ralph Bowden  
Lisa Bowley  
David & Nancy Boyd  
Sherry & Carter Boydston  
Martha Brane & Lewis Sussman  
Patti Breedlove  
Jane Burman-Holtom  
Dorothy(Doe) Brown  
Cheryl Calhoun & Ester De Jong  
Neda Caneva  
Alan Carlson & Theresa Guecia  
Peter Carpenter  
Charlotte & Paul Chadik  
Candace Cliff  
Amy Coenen  
Debbie Conlon  
Erin Connelly  
Wes Corbett  
Bruce Cornwell  
Diane Craig  
Phylis & James Craig  
Ed & Sheila Crapo  
Michael Curry  
Katie D'Amato-Weinhold  
Eddie Daniel & Jason Neumann  
Nancy Deren  
Sheila Dickison  
Lee & Barbara Dockery  
Cheryl & Paul Doering  
Virgina Dolder  
Mark Elliott  
Robert Emerson  
Jane Emmeree & Erick Smith  
Jean Epling  
Guy & Rhea Epstein  
David Etherington & Jeff Dunn  
Skip & Lynda Everitt  
John Eyler & Fonda Davis  
Tara & Bill Ezzell  
Carol Faas  
Rebecca Falmlen  
Cassandra Farley & Christie McGlaughlin  
Mark Fenster  
Mark & Terrie Flaherty  
Griselda Forbes  
David Patrick & Peggy Ford  
Paul & Ellen Funderburk  
Jessie Furman  
Reisa & Paul George  
Ira Gessner  
Karen & Danny Gilliland  
Matt & Rae Gitzendanner  
Julie & layton Glenn  
Harvey Goldstein  
Dick & Caren Gorenberg  
Jim & Sibet Grantham  
Aubrey Greene  
Jess & Barbara Gregory  
Mary (Gay) & Joe Haldeman  
Jeff & Tashia Hale  
Anne Hastings  
Cliff Haynes  
Elizabeth Hicks  
Colin Hines  
Jay Hmielowski & Mylah Hutchens  
Guenther Hochhaus  
Robert & Lynne Holt  
Chad Hood  
Nora Lee Hoover & Amor Villar  
John Howard  
Sharon (Shea) Huey  
Rosemary Hume  
Gary & Joann Ihas  
Michael Jester  
Karen & Jodie Johnson  
Elta Johnston  
Gilda Josephson  
Clay Kallman & Lauren Groff  
Dale Kaplan-Stein  
Kim Kazimour  
Jim & Melissa Keefer  
Barbara Keener  
Loren Keldsen  
Maureen Killoran & Peter Hyatt  
Paul & Leslie Klein  
Marshal & Laura Knudson  
Reggie Kramel  
Scott & Joanne LaFrumenta  
Pamela Lamber & Sandra Paris

## COLLIER CHALLENGE DONORS

Hayley Mathis  
Hilary Mathis  
Sarah Maxwell  
Helen McCune  
Gary & Laura McGill  
Kathleen McGlone  
Martin & Caryl McKellar  
Sue & Jack Mecholsky  
Carol F. Meyer  
Catie Miller & Kirsten Engstrom  
Jeff & Lauren Miller  
Georgia & Ron Mills  
Charlie Mitchell  
John Matthew Morgan  
Richard & Joanna Morrow  
Marni & Tres Most  
Esther Negrin  
Dorothy & Gale Nevill  
Kimberlee Oakes  
Robert K. & Carol Anne Oglesby  
Debi Pais & Bob Kolb  
Amy Pazzalia & Jeff Stokes  
H. S. & Susanne Pennypacker  
Julie & Layton Penrod-Glenn  
Liz Perdue  
Susan Peters  
Peggy & Nancy Peterson  
Ed & Sandra Pettegrew  
Bradley & Marta Pollitt  
Lisa & James Posteraro  
Beckie Pozek  
Gary Prowe  
Barbara Jean Raskin  
Sandy & Larry Reimer  
Ralf Remshardt & Caron Cadle  
Churchill & Gay Roberts  
Janet Roberts  
Gail Robinson & Carol Heymann  
Arthur & Joyce Rosenblatt  
Jane & Mike Ryals

Betsy & David Sanders  
Whitney Sanford & Kevin Veach  
Carol & Jim Sarisky  
Debbie Savage  
Karen Scarborough  
Suzanne Scheraga  
Suzanne Schiemann  
Diane & Jeff Shamis  
Cindy Shea  
Allison & Jason Shinn  
Beth & Jeff Siegel  
Michael Singer  
Brenda Smith & Ronald Burrichter  
Eileen McCarthy Smith  
Halbert & Ruth Smith  
Madeline Smyth  
David & Loren Smyth  
Linda & Keith Stanfill  
Caroline H Stanhope  
Mike Still  
G. W. Swicord  
Joe Thigpen & Becky De Marie  
Kelly Thompson  
Farol Tomson  
Tonewood Family Music Inc.  
Martin & Vibeke Vala  
PJ van Blokland  
Kirk van Meter  
Vasanthi Vanniasingham  
Gary & Martha Waltman  
Marta Wayne  
Tom & Mary Louise Weber  
Dr. Jan Snyder  
Robin West & Ken Wald  
Roger & Ellen West  
Tom & Julie Whitney  
Carol Willis  
Gene Witmer  
Dr. Sarah Wittstruck  
Carole & Bill Zegel



# NO DRAMA

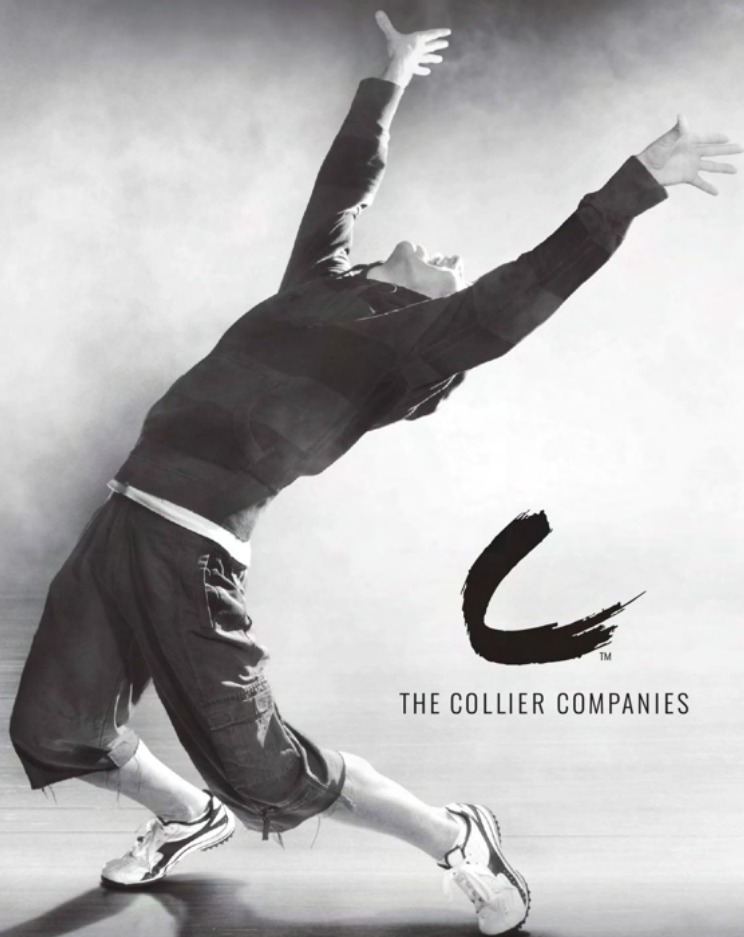
Just Fantastic Apartment Homes and Amenities.

apartments in  
gainesville.com

Your one source to find the perfect place—offering a variety of choices in both student and conventional communities.

# OVER TEN YEARS

Proud Sponsor and Housing Provider for The  
Hippodrome State Theatre and its Performers



THE COLLIER COMPANIES

[COLLIERCOMPANIES.COM](http://COLLIERCOMPANIES.COM)



**In 2023 the Leading Ladies raised \$50,000!**



## **Giving Circle**

**Ready to take your Giving  
to the next level?**

**Want to support the Arts?**

**Join the Hippodrome's Leading Ladies!**

**Interested in joining?**

**Contact Nell Page Rainsberger at**

**[development@thehipp.org](mailto:development@thehipp.org)**

**or call 352-231-3211**



The money raised was granted to the Hippodrome Theatre for essential upgrades and resources including archival photo framing, sound system, new technical booth windows, summer camp scholarships, education carts for crafts, and catering room storage.

**PROUDLY SUPPORTING THE  
HIPPODROME THEATRE.**



*“The Hippodrome is the heart  
of downtown Gainesville.”*

*Ken and Linda McGurn*



**CBS4 is proud to partner with  
the Hippodrome to empower  
all voices in our community**



**MyCBS4.com**    **: MyCBS4**



# CENTERPOINT

## APARTMENTS

*OWNED BY EFN PROPERTIES AND OPERATED BY MATCHMAKER REALTY*

**Affordable apartment rentals in the heart of Gainesville.  
Walk or bike to UF!**

**We are proud of the quality apartments that we rent.  
Drop by and see why.**

**In addition to offering centrally located rentals at affordable  
prices, we take pride in our on-going quality maintenance.**

**Call us at 352-872-5050**

**1220 NW 12TH STREET  
GAINESVILLE, FL 32601  
352-872-5050  
WWW.MATCHMAKERPM.COM**



**no day  
but today  
to**

**RENT**

**With AMJ!**



*Property Development*

*Residential Property Management*

*Commercial Property Management*

**Contact AMJ for a  
move today!**

**502 NW 16<sup>th</sup> Avenue, Suite 1**

**Gainesville, FL 32601**

**352-371-8100**

**[www.amjinc.com](http://www.amjinc.com)**



**Our Name  
Says It All!**



Residential & Commercial

**Plumbing Services  
and  
Emergency Repair**



**(352) 377-1009**

**Quality-Plumbing.com**

***We Are Proud Supporters of the  
Hippodrome Theater***

GAINESVILLE'S LEADING DESIGN-BUILD COMPANY



PROUD SUPPORTERS OF THE  
**HIPPODROME THEATRE**

**98.5 KTK**  
80s, 90s & NOW

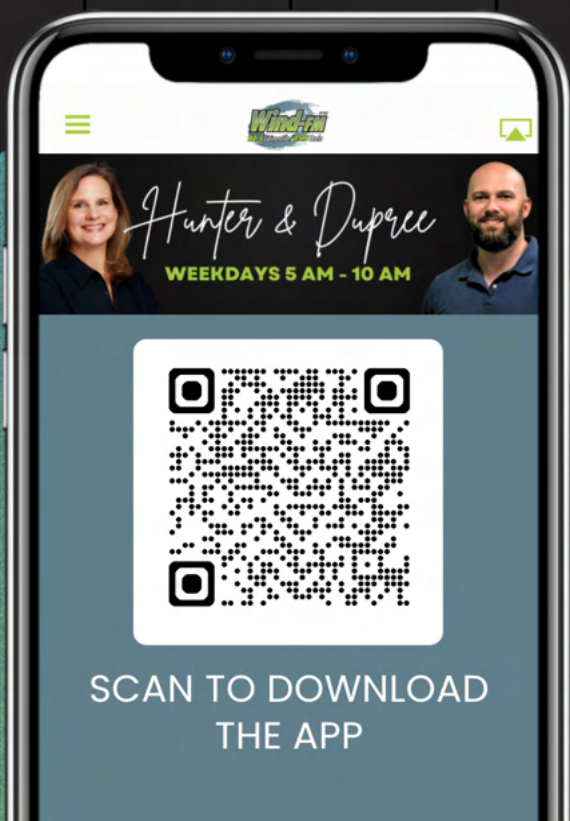
**ESPN**  
**GAINESVILLE**  
**((850AM))**

**97.3 WSKY**  
**FM NEWS TALK**

COUNTRY  
**103.7**  
**THE GATOR**

# ROCK LOUDER LIVE LARGER STREAM SMARTER

DOWNLOAD THE WIND-FM APP



# 2024-2025 PERFORMANCE SEASON

Shows and dates are subject to change.

For tickets, call (352) 392-1653 or visit [www.ticketmaster.com](http://www.ticketmaster.com)

## PERFECT ARRANGEMENT

By Tophér Payne

Co-Produced with the Hippodrome Theatre

AUG. 30 – SEPT. 22, 2024

HIPPODROME THEATRE

Directed by Tim Altmeyer

## PIPELINE

By Dominique Morisseau

SEPT. 12-22, 2024

CONSTANS THEATRE (BACKSTAGE)

Directed by Ryan Hope Travis

## MEREDITH WILLSON'S THE MUSIC MAN

Book, Music, and Lyrics by Meredith Willson

Story by Meredith Willson & Frank Lacey

Additional Lyrics by Marc Shalman & Scott Whittman

Presented through special arrangement with Music Theatre International (MTI).

OCT. 16-27, 2024

BLACK BOX THEATRE

Directed by Colleen Rua

Choreographed by Andrew Cao

Musical Direction & Conduction by Anthony Offerle

## WHY ARE YOU LIKE THIS? (THE AUDIENCE SERVICES PLAY)

By Sharal Bohannon

Part of Reader's Theatre Series

NOV. 7-8, 2024

CONSTANS THEATRE (BACKSTAGE)

Directed by Jashodhara Sen

## AGBEDIDI: A FUSION OF TRADITIONAL AFRICAN AND CONTEMPORARY DANCE

NOV. 21-24, 2024

BLACK BOX THEATRE

Directed by Rujeko Dumbutshena

## MACBETH

By William Shakespeare

Adapted by Kaitlin Henderson

FEB. 7-16, 2025

BLACK BOX THEATRE

Directed by Kaitlin Henderson

## BFA DANCE SHOWCASE

FEB. 19-23, 2025

G-6 STUDIO

## THE IMPORTANCE OF BEING EARNEST

By Oscar Wilde

MAR. 7-14, 2025

CONSTANS THEATRE

Directed by Lauren Warhol Caldwell

## SPRING INTO DANCE

APR. 10-13, 2025

CONSTANS THEATRE

Directed by Isa Garcia-Rose

## THE CONFERENCE OF THE BIRDS

Based on the poem by Farid ud-Din Attar

Stage Version by Peter Brook and Jean-Claude Carrière

Part of Reader's Theatre Series

APR. 17-18, 2025

BLACK BOX THEATRE

PHOTO BY MICHAEL A. EADY

School of  
THEATRE +  
DANCE

  #UFSOTD

VISIT: [www.arts.ufl.edu](http://www.arts.ufl.edu)

COLLEGE OF THE ARTS

Public Broadcasting for North Central and Mid-Florida



---

# WUFT

---



## WUFT TV

5.1 PBS | 5.2 Create | 5.2 The Florida Channel

## WUFT FM 89.1/90.1

NPR News and Talk



*Dedicated to the Fine Art of Listening*

89.1 HD-2 | 102.7 FM Gainesville | 88.5 FM Archer

**WUFT.org**

Every Phase Of Your Life  
Will Demand  
A Different Version  
Of You

We'll Help You Keep Up



Free guest pass  
[ghfc.com/ghf-pass](http://ghfc.com/ghf-pass)

The logo for Gainesville Health & Fitness. It features the word "Gainesville" in a large, stylized, black serif font. Above the letter "i" in "Gainesville" is a solid black circle. Below "Gainesville" is the text "Health & Fitness" in a smaller, black, sans-serif font.





SWEETWATER CATERING CO.

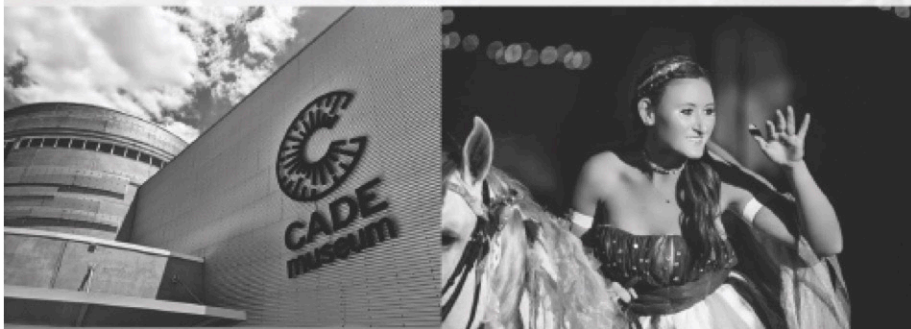
Fantastic food & stellar service



[SWEETWATERINN.COM](http://SWEETWATERINN.COM)

625 E. University Ave. • Gainesville, FL • 352.373.6760

# Find Events, Attractions & **WHAT'S GOOD.**



Text **WhatsGood** to 22828  
for the weekly events guide.

Visit Gainesville, Alachua County  
is proud to shine a spotlight on  
all that is good in our community.

Make plans for the weekend  
or your next night out  
at **WhatsGoodGNV.com**.

Visit  
**GAINESVILLE**  
Alachua County, FL

*Where Nature & Culture Meet*



# Harry's<sup>®</sup>

SEAFOOD • BAR GRILLE

*"A New Orleans Style Restaurant"*



Bourbon Peach Smash



Andouille Crusted Grouper

## Every Tuesday is Fat Tuesday! All Day Every Tuesday

All Draft Beer \$4 • House Wine \$5

Premium Cocktails \$5 • Super Premium Cocktails \$6

Harry's Signature Cocktails \$7

**Happy Hour Daily • 2-7 pm**

110 SE 1st St. • Gainesville, FL • 352-372-1555

[www.HookedOnHarrys.com](http://www.HookedOnHarrys.com)



# EXPECT MORE WITH MOORE.

**Our CPAs and advisors help you and your business go further and achieve more... and have a darn good time doing it.**

*Raise your expectations by seeing what we can do for you.*

- » Assurance
- » Business Advisory
- » CFO Consulting
- » Data Intelligence
- » HR Solutions

- » Outsourced Accounting
- » Tax Planning & Compliance
- » Technology Solutions
- » Transition Planning
- » Wealth Management



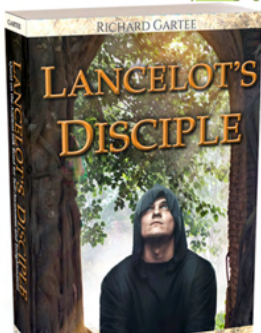
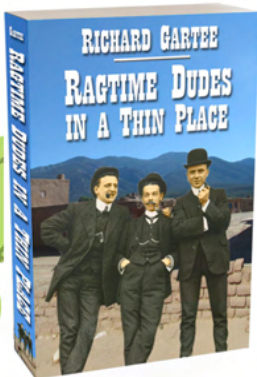
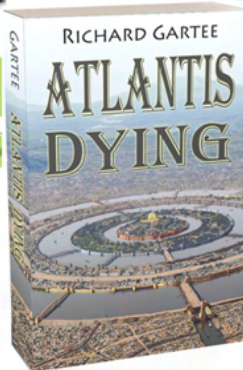
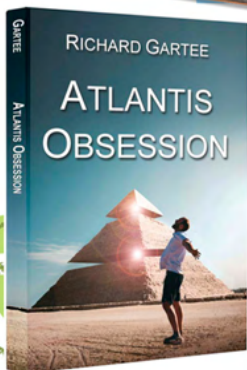
**JAMES  
MOORE**

352-378-1331  
Jmco.com  
info@jmco.com

# LAKE & EMERALD PUBLICATIONS

*Publisher of the complete history of the Hippodrome*

*and award-winning novels:*



# HIPPODROME CINEMA

**ALL  
TICKETS &  
SHOWTIMES**



A QR code is located below the text, enclosed in a square frame with corner markers.



# HAPP EDUCATION



## **SUMMER SPECTACULAR 2025**

*JUNE 9-27 & JULY 7-25*

*AGES 8-17*

## **HIPP KIDS SUMMER SPECTACULAR 2025**

*JUNE 9-27 & JULY 7-25*

*AGES 6-8*

**SIGN UP AND FIND OUT MORE INFO**



**THEHIPPO.ORG/EDUCATION**

HIPPODROME



THE HIPPODROME PRESENTS

**PUMP BOYS**

**&**

**DINETTES**

**MAY 30 - JULY 6**

**LIVE**

**CONCEIVED AND WRITTEN BY**

**JOHN FOLEY, MARK HARDWICK,  
DEBRA MONK, CASS MORGAN,  
JOHN SCHIMMEL AND JIM WANN**

**THEHIPPO.ORG | 352 375 4477**

City of **Gainesville** *Visit* **GAINESVILLE**  
Alachua County, FL



**PUMP BOYS AND DINETTES IS PRESENTED BY ARRANGEMENT WITH  
CONCORD THEATRICALS. WWW.CONCORDTHEATRICALS.COM**