

Production Team

Artistic DirectorStephanie Lynge
 Director.....Michelle Bellaver ^
 Stage Manager.....Olivia Bradshaw
 Sound Designer.....Amanda Nipper
 Lighting Designer.....Bill Boothman
 Costume Designer.....Mason Baria
 Dramaturge/Assistant to the Director.....Jacqueline St. Pierre

**Appearing through an Agreement between the Hippodrome Theatre and Actors' Equity Association, the Union of Professional Actors and Stage Managers in the United States.*

^ Member of the Hippodrome Theatre's company of actors.

The Hippodrome Theatre recognizes and acknowledges that it resides on the historic territories of the Timucua and Seminole peoples who long inhabited this land.

Actors' Equity Association

Actors' Equity Association ("Equity"), founded in 1913, is the U.S. labor union that represents more than 50,000 actors and stage managers. Equity seeks to foster the art of live theatre as an essential component of society and advances the careers of its members by negotiating wages, working conditions and providing a wide range of benefits, including health and pension plans. Actors' Equity is a member of the AFL-CIO and is affiliated with FIA, an international organization of performing arts unions. #EquityWorks



Hippodrome programs are sponsored in part by the National Endowment for the Arts, the Florida Department of State, Division of Cultural Affairs and the Florida Council on Arts & Culture; Visit Gainesville Alachua County, and by the City of Gainesville, Dept. of Parks, Recreation, and Cultural Affairs. Playbill by Franziska Raeber.



Please do not use the entrances and exits during the performance.
The videotaping or other video or audio recording of this production is strictly prohibited.

THE VIDEOTAPING OR MAKING OF ELECTRONIC OR OTHER AUDIO AND/OR VISUAL RECORDINGS OF THIS PRODUCTION AND DISTRIBUTING RECORDINGS OR STREAMS IN ANY MEDIUM, INCLUDING THE INTERNET, IS STRICTLY PROHIBITED, A VIOLATION OF THE AUTHOR(S)'S RIGHTS AND ACTIONABLE UNDER UNITED STATES COPYRIGHT LAW.

FOR MORE INFORMATION, PLEASE VISIT: <https://concordtheatricals.com/resources/protecting-artists>



HIPPODROME THEATRE
THEHIPPO.ORG | 352 375 4477



City of
Gainesville



"DRY LAND is presented by special arrangement with Dramatists Play Service, Inc., New York

"Dry Land" was Originally Produced by Colt Cocur, New York NY

Developed at the Ojai Playwright Conference:

Robert Egan, Artistic Director/Producer

Developed with the support of New York Stage and Film's Powerhouse Season at Vassar

Hippodrome productions are supported in part by: the National Endowment for the Arts, the Department of State, Division of Cultural Affairs, the Florida Council of Arts and Culture and the State of Florida, Visit Gainesville Alachua County, and by the City of Gainesville Parks, Recreation, and Cultural Affairs Department.



THE HIPP UNPLUGGED:
 A STAGED READING SERIES

Dry Land

By Ruby Rae Spiegel

Directed by Michelle Bellaver
February 6th at 6 pm

HIPPODROME THEATRE
THEHIPPO.ORG | 352 375 44 77



Gainesville.
 Citizen centered
 People empowered



"Bootycandy" is presented by arrangement with Concord Theatricals on behalf of Samuel French, Inc. www.concordtheatricals.com
 Hippodrome productions are supported in part by: the National Endowment for the Arts, the Department of State, Division of Cultural Affairs, the Florida Council of Arts and Culture and the State of Florida, Visit Gainesville Alachua County, and by the City of Gainesville Parks, Recreation, and Cultural Affairs Department.



Proudly Presents
Dry Land

by Ruby Rae Spiegel and directed by Michelle Bellaver

Cast

Amy.....Ella Romaine
Ester.....Alina Sunoo
Reba.....Sophia Paige
Victor.....Bryce Hagen
Janitor.....Shamrock McShane

Who's Who in Dry Land

Ruby Rae Spiegel (Author)



Ruby Rae Spiegel is from Brooklyn, New York. Her first play, *Carrie & Francine*, was selected for the OffBroadway Summer Shorts 5 Festival. *Dry Land* was produced at the HERE Arts Center by downtown theater company, Colt Coeur, Permanent Record Theatre, Kings Cross Theatre, Center Theatre Group, TheatreLAB, Kirk Douglas Theatre, Forum Theatre, and it was developed at New York Stage and Film’s Powerhouse Summer Theater Session, as well as the Ojai Playwrights Conference. She has written for TV and short films including *The OA* (2016), *Mindhunter* (2017), and *Some of Us Had Been Threatening Our Friend Colby* (2015). Ruby is a graduate of Young Playwrights Inc. and Yale University.

Michelle Bellaver (Director)



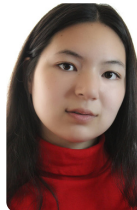
Michelle Bellaver (she/her) is an interdisciplinary director, performer, and writer working in theatre and film. Her artistic and academic focus has been on inter-media performance, new play development, and intersectional feminist performance practices, including her research on and development of *The Female Gaze* and its methodology in filmmaking, video, and theatre performance. Recently she wrote and directed the experimental feature film *Saint: 5 Etudes for Joan of Arc*. Her playwriting has been in residence, received readings, development workshops, and works-in-progress showings at The Tank NYC, the Purple Rose Theatre Company, and Dixon Place. Her short story *Honeymoon Sweet* can be found in *The Windsor Review: International Journal*. Michelle is a member of SAG-AFTRA, Actors’ Equity Association, and the Lessac Research and Training Institute.

Ella Romaine (Amy)



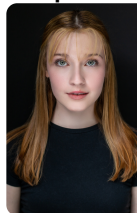
Ella Romaine (she/her) is a 3rd year BFA Acting major from St. Augustine, FL. She is honored to be making her Hipp debut with such an inspiring group of artists, telling an important story. She would like to thank Michelle for trusting her with Amy, and her family and roommates for their unwavering support. And to all those who see themselves or loved ones in Amy, keep fighting like a girl. You are never alone. Link to Planned Parenthood for donations, information, and emergency line: <https://www.plannedparenthood.org>

Alina Sunoo (Ester)



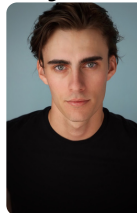
Alina Sunoo (she/her) is from Seattle, WA and is currently in her second year of training in the Acting MFA program at the University of Florida. She has previously performed in the 2022 New Works Festival here at the Hippodrome (*Rob in The Ultimate Cheeseburger*). Alina is thrilled to join this cast in sharing the story of *Dry Land* with you. Enjoy!

Sophia Paige (Reba)



Sophia Paige (she/her) is thrilled to be a part of this wonderful cast and crew. You may have previously seen her as Phebe in the Hippodrome’s production of *As You Like It* or as June in UF’s production of *Marisol*. She can’t wait to share this story with you!

Bryce Hagen (Victor)



Bryce Hagen (he/him) is currently a BFA Actor at the University of Florida, and is excited to be making his Hippodrome debut. Past credits include *Rhinoceros*, *Antigone*, *Lungs*, and *Dog Act*. He would like to thank family, friends, and loved ones for their continued support.

Shamrock McShane (Janitor)



Shamrock McShane (he/him): 2016 Atlanta Black Theatre Festival Best Supporting Actor, Shamrock appears on screen in the Tom Miller film *The Seven Sides of Shakespeare* and on stage with Alachua County Poet Laureate E. Stanley Richardson in *An Evening with Frederick Douglass and John Brown*.